



Intermediate

Half Marathon Training Program

Half Marathon Distance

The half marathon distance covers 21.1km, an elite runner produces times of under 70 minutes with the world record being at 58:23 for men and 65:12 for women. The average time for most non competitive races is usually at or just under the 2hr mark. The beginners program is 16 weeks in length and will take the beginner from running 2-4kms up to a peak of 16km 2 weeks from the race. The included intermediate and advanced programs are 10 weeks in length. In the last 5 weeks the intermediate program averages 30km per week whilst the advanced averages 40km per week

Choosing your Level

Beginners - Suited to those new to running, someone with excess weight to lose or anyone looking for a low mileage running program

Intermediate - For the fit non runner, or the less fit trained runner. The intermediate program will give you confidence before the event, taking you up to the race distance in training

Advanced - For the sub-elite regular runner and the naturally gifted, this program will help you acheive the best time possible for a program that utilizes 4-5 days of training.

Choosing your running program - Half Marathon				
	Maximum running distance without stop	Estimated 5km run time (minutes)	2.4km Fitness Test Result (minutes)	Goal / Expected Finish Time
Beginner	2km-4km	32:00 - 42:00	14:14 - 18:38	1 hr 58mins - 2hrs 40mins
Intermediate	4km-10km	24:00-32:00	10:42 - 14:13	1 hr 44mins - 2 hrs 12mins
Advanced	10km +	16:00-24:00	7:09 - 10:41	1 hr 16mins - 1 hr 44mins

Program Structure

The programs contain 4-5 exercise sessions per week.

Each week contains a strength, an interval, 1-2 medium runs and a longer run. There are specific warm ups to perform before each strength and interval session. If you're experiencing tightness you can also include a stretching routine post run, designed to improve mobility around the hips and ankle joints.

About the Program



Half Marathon Training Program

The Program

Using your program

This program has been designed for every day runners. People who have commitments both work and family related. The program aims to improve performance in the most time efficient way whilst focusing on injury prevention. The weekly distance covered is shorter than many running programs. Don't be concerned by this, constant high mileage programs can result in a decreased training intensity and an increased risk of injury. This program focuses on quality of training. Each week contains 2-3 running sessions an interval session and a strength session

Training sessions

The shorter run

With the moderate training mileage you can focus more on pushing yourself during your weekly shorter runs. Research shows intensity to be one of the most important contributors to improving aerobic fitness. If you feel fresh, aim every few sessions to push for some PB's in your running speeds. Use a GPS watch or smart phone to monitor you running pace on a week to week basis

The longer run

Increased training distances help to improve running economy or efficiency and prevent fatigue. This is what is referred to when people say they need to get the miles in the legs. If you're running the half marathon and marathon distance total training volume starts to become a larger predictor of performance. For this reason the long run is introduced into your program. This increased training distance and is what contributes the most to a "runners physique". This can result in you losing a step off your sporting speed and a little bit of muscle mass. This is something new runners should consider when choosing the distances they wish to race and train over

Strength sessions

The strength session can initially produce muscle soreness. This is a normal occurrence. Don't be concerned. It will peak 24-48hours after you strength session. Usually by week 3 your muscles have adjusted and soreness will be minimal. Whilst you have leg muscle soreness your aerobic performance will drop and you will experience earlier fatigue in your muscles. For this reason if you miss a couple of strength sessions be careful not to start back into strength training within 4 days of your race or an important long training run. This could result in large decreases in your performance

Nutrition and Hydration

Read through the article on nutrition and hydration and try to incorporate some of these strategies particularly on your longer runs

Injuries

Read through the article on injuries. Keep a look out for common problems and seek a physiotherapist for problems that are worsening, otherwise you may be off running for longer than need be

Footwear

Give yourself time to adjust to new footwear by rotating new and old shoes. Don't race in new footwear. Ideally seek a podiatrist with some running experience or a trustworthy running store for advice on shoes for your training

Half Marathon Training Program

Strength session warm up

Strength session warm ups

The strength session warm up focuses on improving range of motion and strength in some key areas which are commonly tight or weak in distance runners. Perform the strength session warm up prior to each strength training session

Strength Session Warm-up	
3-5 minute jog	
Heel Taps - 10 forward and 10 sideways repetitions on each leg Lying Clams - 20-40 repetitions each side Lying Shoulder Press - 20-30 repetitions or Modified version Lunge Rotations - 10 repetitions (5 each side)	} Complete 2 rounds of this circuit

Interval Session Warm-up

The interval session warm up functions to both prevent immediate injury and to improve running technique and performance. Perform the interval session warm up before each interval session

	Beginner	Interm.	Advanced
Steady Jog (3 minutes)			
Jog / Backwards Run } 40-50 meter lengths Jog / A Skips } 3 Rounds Jog / Heel Flicks }			
Standing Side leg Raises 15 repetitions (each Side) - 3 Rounds			
Lunge Drives 15 (each side) - 2 Rounds			
Lunge Jumps 15 repetitions (each side) - 2 Rounds			

Assessments

Every 1-2 weeks the program contains assessments to measure peak aerobic fitness, speed and leg endurance. Perform the assessments and record your results to monitor your progress throughout the program

Half Marathon Training Program

Articles

[How to choose your running shoe](#)



The range of shoes available to the consumer is staggering. Research into footwear has led to the creation of a diverse range of shoes types, combine this with the influential pull of marketing and the consumer is faced with a difficult decision. What shoe is right for me? This answer to this question comes down to the shoes ability to effect injury and performance. Its important to know what shoe is right for one person is not necessarily right for another.

Some general rules to consider when purchasing your shoes

- Lighter shoes improve running economy and improve performance but decrease cushioning
- A higher training load will benefit from more cushioning
- Flat low heel drop shoes increase foot and lower leg muscle activity improving arch and foot function
- Pronation injuries such as patellofemoral pain, ITB syndrome, medial tibial stress syndrome and Achilles tendonitis will initially benefit from arch support and an increased heel height
- Heavier athletes will require a larger shoe with increased cushioning
- Foot structure affects injuries. Flat feet will benefit from larger heeled shoes and more support to lower foot stresses
- High arched feet will require more cushioning and benefit from flatter lower heel drop shoes
- Flat low heel shoes decrease foot contact times and improve running speeds
- Slower runners are more likely to use a heel to toe running gait and may prefer a higher heel shoe

[Running Technique](#)

There isn't such a thing as correct running technique. Differences in body shape, mass and muscle structure will all influence running technique resulting in a different stride in each runner. Some biomechanical principles do exist that will influence injury risk and running performance

- The upper arm should be low and elbows bent a little less than 90 degrees
- Excessive heel striking increases the forces placed on the weight bearing area of the knee and the shin bone
- Forefoot striking influences forces placed on the feet, Achilles and calf muscles
- Excessive pelvis tilt or back arch can influence lower limb mechanics altering pronation
- Inward rotation at the knee influences injury risk
- Running economy and performance may be influenced by heel lift during the swing phase

Half Marathon Training Program

Articles

[The Gluteus muscles and the runner](#)



The importance of the gluteus muscles - Injury prevention

Your “Butt” is made up of three gluteus muscles and a series of deep external hip rotators. Your butt muscles are important for developing speed but they also controlling hip motion resulting in an improved running economy and a reduced injury risk.

Patellofemoral pain has been linked with increased internal hip rotation during movement. Strengthening of the external hip rotators aligns the knee such that the medial and lateral quadriceps can produce balanced forces

ITB pain has also been linked with decreased abduction and external rotation strength

Women due to anatomical structure, have a higher incidence of injuries relating to pronation and poor hip muscle control. Strengthening the gluteus muscles with an effective strength training program can help reduce your risk of injuries during your running program.

[Common running injuries](#)

Running injuries can be both acute due to sudden events and overuse due to repetitive movement patterns. In runners the knee is the most commonly affected area followed by the foot and ankle, the hips and then the lower back. The most common running injuries are listed below

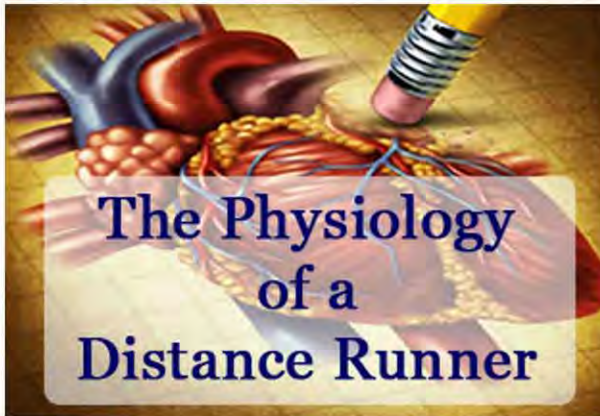
- **Patellofemoral pain** – Pain behind the knee cap, related to anatomical factors and muscle imbalances of the hips and knees
- **Illiotalibial Band (ITB) Syndrome** – Pain on the lateral outside of the knee related to friction most likely due poor technique and imbalances of the foot and hip
- **Anterior Shin Splints** – Pain on the front of the shins related to stress fractures of the tibia due to high impact forces, increased training loads, poor running gait and footwear choices
- **Medial tibial Stress Syndrome** – pain on the medial inside shin bone, related to rotational forces and the pull of muscle fibres on the shin bone
- **Plantar Fasciitis** – Pain on the under side of the foot, thought to result from increased forces on the planta fascia. Theorized contributing factors are excess body weight and training loads, foot type, footwear and calf tightness
- **Achilles Tendonitis** – Overuse injury of the tendon attaching the calf to the rear foot, contributing factors include excess training, over pronation, running on uneven surfaces
- **Muscle Strains** – Can be acute due to footwear changes or speed work or overuse due to muscle and postural imbalances or certain running gait patterns

Identifying your injuries early can help to reduce the risk of further injury. In the full article you can find a list of symptoms for each condition along with advice on whether complete rest or reduced training loads is required

Half Marathon Training Program

Articles

[The Physiology of a distance runner](#)



With most sports there are physiological attributes that place the competitor at an advantage compared to their opposition. Running is no different, watching the finish of a running race makes it quite apparent that the characteristics that make you a great weightlifter are not the same characteristics that make you a great runner. Bulging muscles and being 6 foot tall are of no interest to the distance runner. Instead having a well-developed aerobic system, being fatigue resistant and being efficient place the runner at an advantage. Having a low percentage of body fat also advantageous as carrying extra weight costs energy and inhibits performance

Vo2 max is an indicator of a well-developed aerobic system, a high VO2 max indicates a large engine and possibly the ability to perform at a high level in aerobic events

The amount of training you perform along with your muscle fibre type and enzymes effect what is known as the aerobic threshold. Having a high anaerobic threshold means you can operate at a high percentage of your maximum aerobic capacity without fatigue

Running economy is how efficient you are. There can be a 20% variance between two identically weighted people in the amount of energy and hence the amount of effort a person takes to run a given distance. Because you cannot see aerobic fitness, or running economy or fatigue resistance it would be wise not to judge your competition too early as there may be an unassuming star performer amongst you

[Predicting your race time](#)

You can predict your finish time using the running pace predictor. The running pace predictor assumes equality of performance over each distance. If you're a marathon runner whom performs no speed work the calculator may give you a faster finish time for the shorter events. Similarly if you're a short distance runner moving up to a marathon distance the calculator will assume an equal skill level and will give you a faster prediction for marathon time then you may be able to achieve

The running pace predictor can also provide you with your caloric expenditures for each running distance as well as a predicting your VO2 max

Half Marathon Training Program

Articles

[Barefoot V's Shoes](#)

The two questions driving the barefoot debate are whether barefoot running can improve performance and whether barefoot running prevents injury

Barefoot running due to a reduction in shoe mass has the potential to decrease running times by up to 50 seconds per 10km when compared to light weight running shoes. Given a padded surface with adequate traction barefoot running may be of a benefit, on a road or track in race conditions this small 50 second benefit will be quickly lost due to the modification in ones stride to reduce impact. Whether the foot could adapt to handle these impacts is unlikely. It should be noted most barefoot runners in the media circle are very much joggers rather than performance athletes

Barefoot running will definitely reduce your likelihood of developing some injuries, it will though dramatically increase your likelihood of developing others. Changes in technique that occur during barefoot running move loads from the tibial plateau of the knee and the hip to the foot and the ankle.

Running on hard surfaces dramatically increase impact forces in the feet, this can have dangerous effects for the runner. If your foot structure enables it, you're far better off moving to a minimal support, flat, light shoe which contains cushioning. This shoe will provide the majority of the benefits of barefoot running without the negative effects of the loss of cushioning

[Distance running nutrition and hydration](#)

Runners Nutrition

How much
and when??

- Race week taper
- Carbo Loading
- In race Hydration



Utilizing the best nutritional and hydration strategies when performing endurance exercise can prolong the time to fatigue and increase racing performance. Higher carbohydrate diets in the range of 55-70% energy intake have been shown to improve performance in both short distance and long distance events. Some recent research has suggested possible benefits of high fat eating for 5 days followed by a high carbohydrate diet for one day leading up to ultra endurance events. This causes fat adaption in the body whilst keeping carbohydrate levels high. More research is required on this strategy

Carbohydrate loading for 1-2 days along with an adequate 2-3 day taper in training improves distance performance over middle to long distance events

The pre-race meal should be higher in carbohydrates and be lower in fat, fibre and protein

For races lasting greater than 1 hr, 30-60 grams of carbohydrates should be consumed per hour beginning at the 60 minute mark. These should be consumed in small 10-20 gram loads every 20 minutes.

Sweat rates can vary from 250mls/hour to 2.5 litres/hour. Measure your body weight pre and post training run to gain an insight into your sweat rates. Aim to finish the race weighing 1-2% lighter than your pre-race weight. This is due to the release of stored water during the breakdown of muscle glycogen. Hyponatremia is a dangerous drop in blood sodium levels resulting from over hydration. Be careful if you're a slower runner not to drink so much water as to finish the event above your pre-race weight



Half Marathon Training Program



Intermediate

[Click here for an interactive version of the program with exercise videos and in depth descriptions](#)

The Program

Half Marathon Running Program - Intermediate				
	Circuit / Strength	Short Run	Intervals	Long Run
Week 1	<p>Equipment: Running field / treadmill, Swiss Ball Strength session warm up: Exercises:</p> <p>3 sets { Squats - 20 repetitions Hamstring Curls - 20 Repetitions</p> <p>3 sets { Swiss Ball Sit ups - 15 repetitions Single Leg Bridge (30 seconds ES)</p> <p>2 sets { Side Bridge - 30 seconds (ES) Walking Lunges - 20 reps (10 ES) Jog 3-5 mins</p>	<p>Assessment: 2.4km Run Test</p> <p>Score: <input type="text"/></p>	<p>Interval session warmup: 6 x 200 meters @ 2 minutes</p> <p>5 minute jog cool down</p>	<p>6km run</p> <p>Weekly Kilometers</p> <p>12</p>
Week 2	<p>Equipment: Skipping Rope Strength session warm up: Exercises:</p> <p>1 set { Skipping - 100,80,60,40,20 Squats 15,15,15,15</p> <p>3 sets { Swiss Ball Hip Raises - 10 Repetitions (ES) or lying hip raises 20 repetitions (ES) Swiss Ball Sit ups - 20 repetitions Bridge Walk - 30 repetitions</p> <p>3 sets { Step back lunges - 20 (10 ES) Reverse Crunch - 15 repetitions</p> <p>3 sets { Half Burpees - 10 repetitions Side bridge leg Abductions - 10 reps (ES)</p>	8km	<p>Interval Session warmup: Assessment: 8 x 400 meters @ 3:00</p> <p>Score: <input type="text"/></p>	<p>8km run</p> <p>Weekly Kilometers</p> <p>20</p>
Week 3	<p>Equipment: Field, Markers Assessment: Leg Enduro</p> <p>2 sets { Reverse crunch - 20 repetitions Sit ups - 20 repetitions Side bridge Leg Abductions - 10 reps (ES) Supermans - 30 repetitions (15 ES)</p> <p>Score: <input type="text"/></p>	6km run	<p>Interval Session warmup: 3 X 1000 meter run (3 minutes rest in between) 6 x 100 meter run @ 1 minute</p>	<p>10km run</p> <p>Weekly Kilometers</p> <p>22</p>
Week 4	<p>Equipment: Swiss Ball, Skipping Rope Strength Session warmup:</p> <p>6 min AMRAP { Skipping 80 repetitions Squats 15 repetitions</p> <p>3 sets { Jumping Lunges 20 Swiss Ball Sit ups - 20 repetitions</p> <p>3 sets { Jackknife - 15 repetitions Single Leg Hamstring Curls - 10 reps</p> <p>3 sets { Side Bridge - 30 seconds each side Reverse Crunch - 20 repetitions</p> <p>2 sets { Lunge Burpees - 20 repetitions (10 ES) Single Leg Hip Raises - 25 repetitions (ES)</p>	8km run	<p>Jog 5 minutes</p> <p>5-8 x Hill sprints 30 seconds at 80% effort rest 1:30 minutes between repeats</p> <p>Jog 5 minutes</p>	<p>14km run</p> <p>Weekly Kilometers</p> <p>29</p>

Half Marathon Training Program

Intermediate

[Click here for an interactive version of the program with exercise videos and in depth descriptions](#)

The Program

Week 5	<p>Equipment: Field, markers</p> <p>Strength session warm up:</p> <ul style="list-style-type: none"> 3 sets { Run 100 meters 3 sets { Squat - 20 repetitions 3 sets { Run 100 meters 3 sets { Lunge - 10 repetitions (ES) 3 sets { Run 100 meters 3 sets { Sit up - 20 repetitions 3 sets { Run 100 meters 3 sets { Half Burpees - 10 repetitions 3 sets { Side Bridge - 30 seconds (ES) 3 sets { Reverse Crunches - 20 repetitions 	6km run	<p>Interval session warm up</p> <p>Assessment:</p> <p>8 x 400m @ 3:00</p> <p>Score:</p>	<p>12km run</p> <p>Weekly Kilometers</p> <p>23</p>
Week 6	<p>Equipment: 15 meter flat space, step,</p> <p>Strenght session warmup:</p> <ul style="list-style-type: none"> 3 sets - Step ups - 10-15 repetitions (ES) 3 sets { Jumps - 8 repetitions 2 sets { Backwards run - to jump start point 2 sets { Reverse crunch - 25 repetitions 3 sets { Half Burpee - 15 repetitions 3 sets { Side Bridge Leg Abducitons- 15 (ES) 2 sets { Step back lunges - 20 (10 ES) 2 sets { Skipping - 150 repetitions 2 sets { Squats - 30 repetitions 	8km run	<p>Interval session warm up:</p> <p>3 X 1000m - 3 minutes rest between repeats</p> <p>5x200m @ 2:00</p> <p>Jog 1km</p>	<p>16km Run</p> <p>Weekly Kilometers</p> <p>31</p>
Week 7	Strength Rest Day	<p>6km run</p> <p>6km run</p>	<p>Interval session warm up</p> <p>Assessment:</p> <p>8 x 400m @ 3:00</p> <p>Score:</p>	<p>10km run</p> <p>Weekly Kilometers</p> <p>28</p>
Week 8	<p>Equipment: Field, Markers</p> <p>Assessment:</p> <p>Leg Enduro</p> <ul style="list-style-type: none"> 2 sets { Reverse crunch - 20 repetitions 2 sets { Sit ups - 20 repetitions 2 sets { Side bridge Leg Abductions - 10 reps (ES) 2 sets { Supermans - 30 repetitions (15 ES) <p>Score:</p>	8km run	<p>interval session warm up</p> <p>5X200m @ 2:30 minutes jog 2km</p> <p>8X100m @ 1 minute</p>	<p>20km run</p> <p>Weekly Kilometers</p> <p>35</p>
Week 9	<p>Equipment: Swiss Ball, Skipping Rope</p> <p>Strength Session warmup:</p> <ul style="list-style-type: none"> 6 min AMRAP { Skipping 80 repetitions 3 sets { Squats 15 repetitions 3 sets { Jumping Lunges 30 3 sets { Swiss Ball Sit ups - 20 repetitions 3 sets { Jackknife - 20 repetitions 3 sets { Single Leg Hamstring Curls - 10 reps 3 sets { Side Bridge - 45 seconds each side 2 sets { Reverse Crunch - 20 repetitions 2 sets { Lunge Burpees - 20 repetitions (10 ES) 2 sets { Swiss Ball hip raises - 10 repetitions (ES) 	<p>Assessment:</p> <p>2.4 Km run test</p> <p>Score:</p> <p>8km run</p>	<p>Interval session warm up</p> <p>3 x 1000m rest 3 minutes between repeats</p> <p>6 x 100m @ 1 minute</p>	<p>10km run</p> <p>Weekly Kilometers</p> <p>26</p>



Half Marathon Training Program

Intermediate

[Click here for an interactive version of the program with exercise videos and in depth descriptions](#)

The Program

Week 10	Equipment: Swiss ball, treadmill or field Strength session warm up: Step lunges - 30 repetitions (15 ES) jog 500 meters Hamstring curls - 25 repetitions jog 500 meters Squats - 30 repetitions jog 500 meters 2 sets { 3 sets { Sit ups - 30 repetitions Swiss Ball Hip Raises - 10 repetitions (ES) or Lying Hip raises - 20 Repetitions (ES)	5km run	3km run	Race Weekend
				Time: <input type="text"/> Weekly Kilometers 33

Sets = 1 set is a group of repetitions

Repetition = 1 repetition is one lift or one completed movement.

3 sets { Squats - 10 repetitions = 10 squats followed by 10 lunges for 3 sets, equalling 30 squats and 30 lunges in total
 Lunges - 10 repetitions

20 (ES) = Repetitions are to be performed on Each Side ie 20 repetitions on the rights side and 20 repetitions on the left side

@2minutes = Every 2 minutes you will start a new interval. If the run takes you 30 seconds to complete you will have 1 minute and 30 seconds rest before starting the next interval

AMRAP - As Many Rounds As Possible (AMRAP) means you complete as many sets of the exercise as possible in the given time period

Half Marathon Training Program

Intermediate

Intermediate Exercise Descriptions

Bridge



Single leg
Bridge



Hamstring
Curls



Single Leg
Hamstring
Curls



Half
Burpees



Lunge
Burpees



Jacknifes



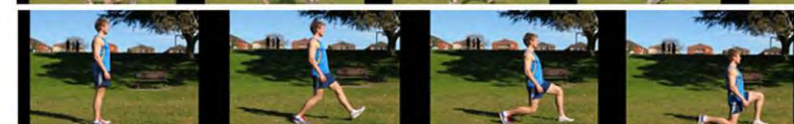
Jumps



Jumping
Lunges



Step
Lunges



Reverse
Crunches



Supermans



Sit ups



Half Marathon Training Program

Intermediate

Squats



Single
Leg Glute
Raises



Swiss Ball
Glute Raises



Swiss Ball
Sit ups



Step ups



Side
Bridge



Side Bridge
Leg
Abductions

